

STATE OF MINNESOTA, }
COUNTY OF MURRAY, } ss.

I hereby certify that the within Instrument was filed in this office for record on the 30th day of AUGUST A.D. 20 19 at 9:00 o'clock A. M, and was duly recorded as Document No. _____

Guelph C. Larson
County Recorder

Index No. _____ P-21

CERTIFICATE OF LOCATION OF GOVERNMENT CORNER

EAST QUARTER Corner of Section 23, Township 107 N, Range 39 W

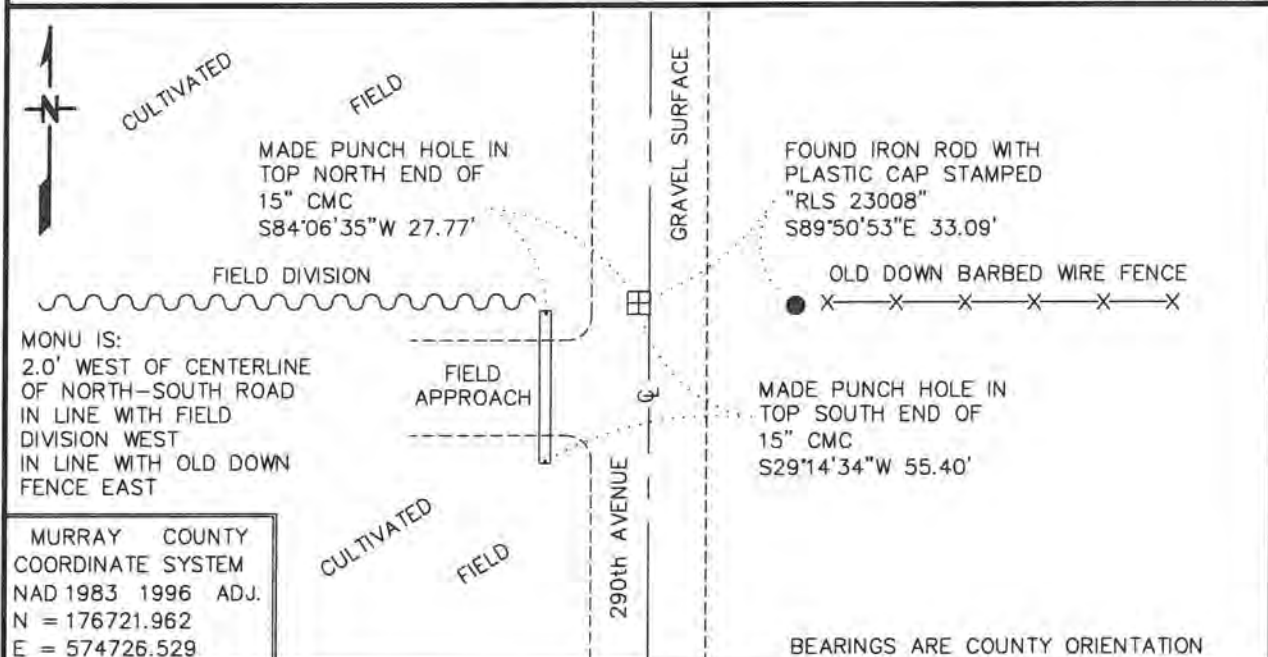
5TH Principal Meridian, State of Minnesota, County of MURRAY

At the corner location shown on the sketch:

■ On 10/18/2017 found a 14" FLAT STONE, DOWN 1.5', OVER A METAL ATTRACTION
DATE

■ left monument as found, lowered monument, removed monument (explain)

■ On 10/18/2017 Placed a 3/4" X 12" REBAR WITH PLASTIC CAP STAMPED
DATE
"MN DNR LS 17003", DOWN 0.3', OVER FOUND STONE



Statement of evidence for this corner location is on back of this page.

APRIL 2018
WMA00745

I hereby certify that this plan, specification, or report was prepared by me or under my direct supervision and that I am a duly Licensed Land Surveyor under the laws of the State of Minnesota.

SIGNATURE

Bruce W. Shepperd
BRUCE W. SHEPPERD

DATE

8/15/19

License Number

17003

- 1985 March, the DNR Bureau of Engineering and now the Division of Lands and Minerals contacted the following for survey information:
Minnesota Secretary of State's Office
Minnesota Department of Transportation in St. Paul
Murray County Recorder's Office
Murray County Engineer's Office
United States Department of the Interior, Fish and Wildlife Office in St. Paul
Martin Land Surveying of Worthington
Madsen Land Surveyors of Fairmont
Sioux Engineering of Windom
- 2017 July, the DNR Division of Lands and Minerals contacted the following for survey information:
Website - mngeo.state.mn.us for GLO plat and field notes
Website - murray-countymn.com for section and quarter section corner information
Murray County Recorder's Office
Zieske Land Surveying, Inc. of Windom
- 1861 U.S. General Land Office notes, obtained from mngeo.state.mn.us, show the corner marked with a wood post set in mound of earth with pits and trench dug around the mound. Also, planted Alder seed between the four pits and trenches.
- 1899 June 21, a Surveyor's Record Book, page 86, obtained from the County Recorder's Office, contains a survey by J. W. Woolstencraft, County Surveyor. Survey shows the corner but does not indicate what kind of monument was found or set. The corner is shown:
2620 feet from the southeast corner of Section 23
- 1976 May 10, a Surveyor's Record Book page for Section 24, T107N, R39W, obtained from murray-countymn.com, shows states that a large stone was found at the corner 6 inches below road grade and took the following ties:
nail and cap in power pole, 56.55 feet, southeast
nail and cap in telephone pole, 38.05 feet, northwest
nail and cap in telephone pole, 43.31 feet, east
- 1976 May 10, a page from an old tie book, obtained from the County Engineer's Office, states that a large stone was found at the corner 6 inches below road grade and took the following ties:
nail and cap in power pole, 56.55 feet, southeast
nail and cap in telephone pole, 38.05 feet, northwest
nail and cap in telephone pole, 43.31 feet, east
- 2002 May 15, a Certificate of Survey in the North Half of the Southwest Quarter of Section 24, obtained from Zieske Land Surveying, Inc., shows that a stone was found over an iron at this corner. The corner is shown:
2635.01 feet from the southeast corner of Section 23
5329.04 feet from the east quarter corner of Section 24
- 2017 October 18, the DNR Division of Lands and Minerals visited the area of the corner and found a 14 inch flat stone, down 1.5 feet, over a metal attraction. Searched for but found no evidence of the record ties. A ¾ inch by 12 inch rebar with a plastic cap stamped "MN DNR LS 17003" was

East Quarter Corner of Section 23, Township 107 North, Range 39 West
Page 2 of 2

set over the found stone and was found to be:

2635.11 feet from the southeast corner of Section 23

5329.16 feet from the east quarter corner of Section 24

2.0 feet west of center line north-south 290th Avenue (gravel surface)

in line with a field division west

in line with and old down fence east

Analysis of the above information led the DNR Division of Lands and Minerals to conclude that the ¾ inch by 12 inch rebar with a plastic cap stamped "MN DNR LS 17003" set over a found stone marks the location of the corner.